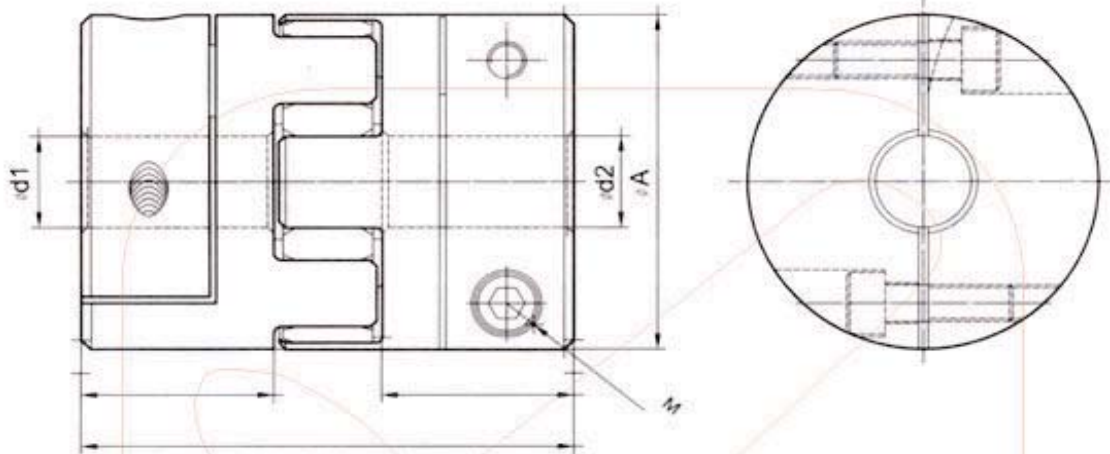


9.1 Elastomer Coupling

- High torque
- High rigidity
- Low inertia
- Backlash-free
- Long service life
- High vibration resistance



Finished Ball Screw



FUNCTION

Model No.	Rated Torque (N.m)	Max Torque (N.m)	Max Rotational Frequency (min ⁻¹)	Static torsion spring stiffness (N.m/rad)	Dynamic torsion spring stiffness (N.m/rad)
SRJ-20C	5	10	15200	51.0	151
SRJ-30C	12.5	25	10200	170.9	505
SRJ-40C	17	34	7600	857.5	2571
SRJ-55C	60	120	5600	2060	6163
SRJ-65C	160	320	4700	3430	10291

Model No.	Weight (kg)		Mass moment of inertia J (kgm ²)		Radial (mm)	Angular (°)	Axial (mm)
	each hub	spider	each hub	spider			
SRJ-20C	8.5x10 ⁻³	1.7x10 ⁻³	0.46x10 ⁻⁶	0.073x10 ⁻⁶	0.10	1.0	0.8
SRJ-30C	18x10 ⁻³	4.2x10 ⁻³	2.5x10 ⁻⁶	0.45x10 ⁻⁶	0.15	1.0	1
SRJ-40C	64x10 ⁻³	6.5x10 ⁻³	20.1x10 ⁻⁶	1.44x10 ⁻⁶	0.15	1.0	1.2
SRJ-55C	130x10 ⁻³	17.4x10 ⁻³	50.5x10 ⁻⁶	7.3x10 ⁻⁶	0.2	1.0	1.4
SRJ-65C	250x10 ⁻³	28.6x10 ⁻³	200.1x10 ⁻⁶	16.3x10 ⁻⁶	0.2	1.0	1.5

DIMENSION

unit : mm

Model No.	A	L	L1	dmax	d1Xd2		M
					d1	d2	
SRJ-20C	20	30	10	10	4 · 5 · 6 · 6.35 · 7 · 8 · 10		M3
SRJ-30C	30	35	11	16	5 · 6 · 6.35 · 8 · 9 · 9.5 · 10 · 11 · 12 · 14 · 15		M4
SRJ-40C	40	66	25	22	8 · 9.5 · 10 · 11 · 12 · 14 · 15 · 16 · 18 · 19 · 20		M5
SRJ-55C	55	78	30	28	12 · 15 · 16 · 18 · 19 · 20 · 22 · 24 · 25		M6
SRJ-65C	65	90	35	38	20 · 22 · 24 · 25 · 28 · 30 · 32 · 35 · 38		M8

Buffer Material : Engineering Class Plastic Material : Aluminum Alloy

Product No : SRJ-AC-d1xd2

ex:SRJ-30C-6x8